

# Eindexamen wiskunde A1-2 vwo 2006-II

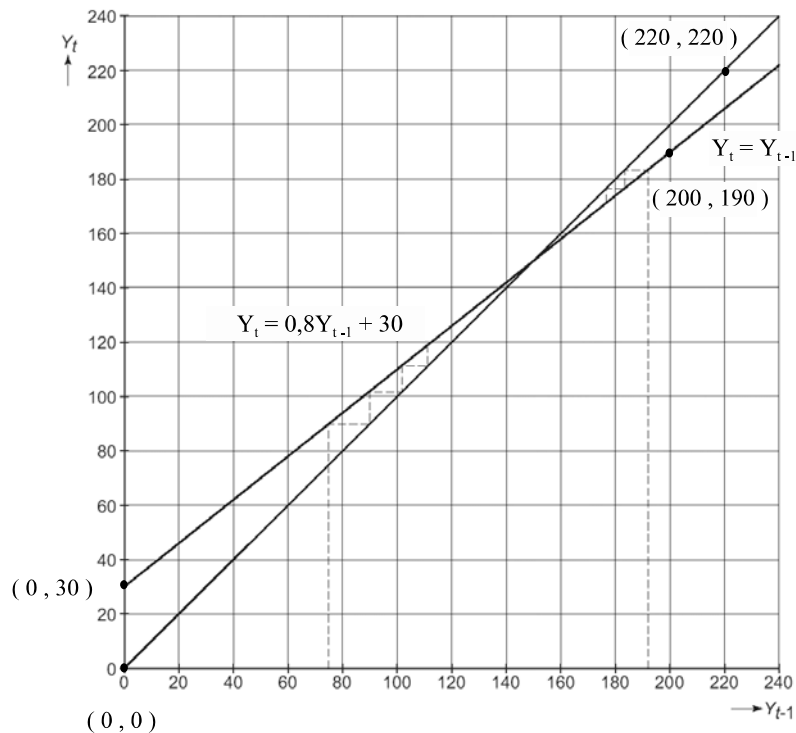
© havovwo.nl

## Evenwicht

$$\begin{aligned} 5. \quad Y_0 &= 40 \rightarrow C_1 = 0,8 \cdot 40 + 20 = 52 \\ C_1 &= 52 \rightarrow Y_1 = 52 + 10 = 62 \\ Y_1 &= 62 \rightarrow C_2 = 0,8 \cdot 62 + 20 = 69,6 \\ C_2 &= 69,6 \rightarrow Y_2 = 69,6 + 10 = 79,6 \end{aligned}$$

$$\begin{aligned} 6. \quad \text{Evenwichtsincome:} \quad Y &= 0,8 \cdot Y + 30 \\ &\rightarrow Y = \frac{30}{0,2} = 150 \end{aligned}$$

7.



$$\begin{aligned} 8. \quad \text{Evenwichtsincome:} \quad Y &= 0,8 \cdot Y + 20 + P \\ &\rightarrow Y = 100 + 5P \end{aligned}$$