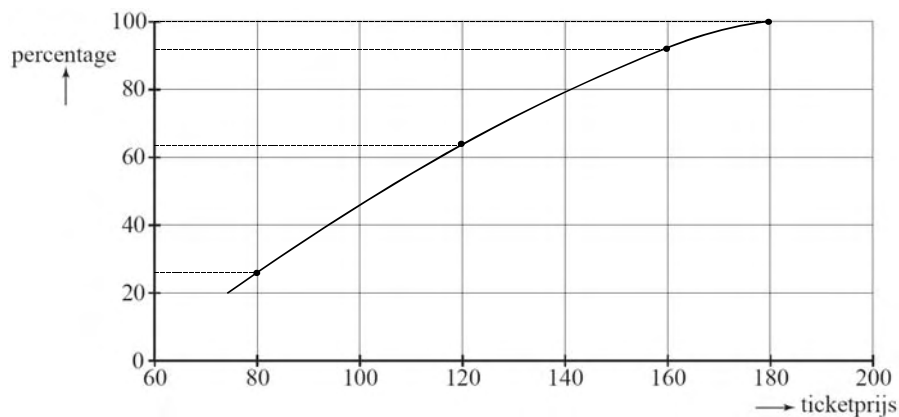


**Goedkoop vliegen**

6.  $\langle p \rangle = \frac{60 + 70 + 80 + 90 + 110 + 130 + 150 + 180 + 210 + 410}{10} = 149 \text{ euro.}$

7.

1	80	25%	] samen 38% (= 63 - 25)
2	100	20%	
3	120	18%	
4	140	16%	] samen 29% (= 100 - 71)
5	160	13%	
6	180	8%	



8.  $P = (1 - 0,04)^{60} = 0,0864$

9.

$\leq 70$	71	72	73	74	75
2500	2150	1800	1450	1100	750
0,18125	0,17149	0,22865	0,22552	0,14628	0,04681

$$E = 2500 \cdot 0,18125 + 2150 \cdot 0,17149 + 1800 \cdot 0,22865 + 1450 \cdot 0,22552 + 1100 \cdot 0,14628 + 750 \cdot 0,04681 = 1756,42$$

Naar verwachting dus € 1756,42 extra inkomsten.